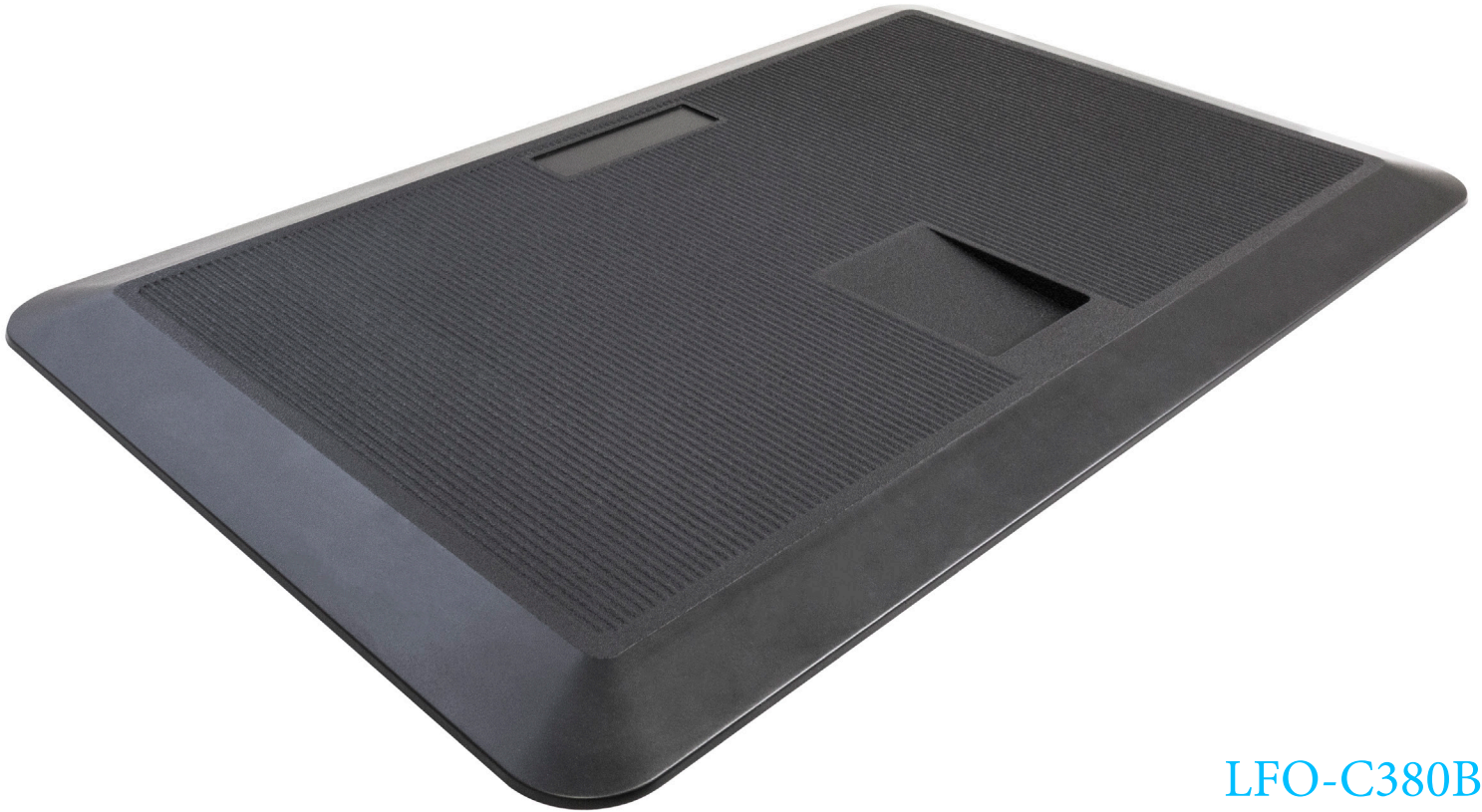




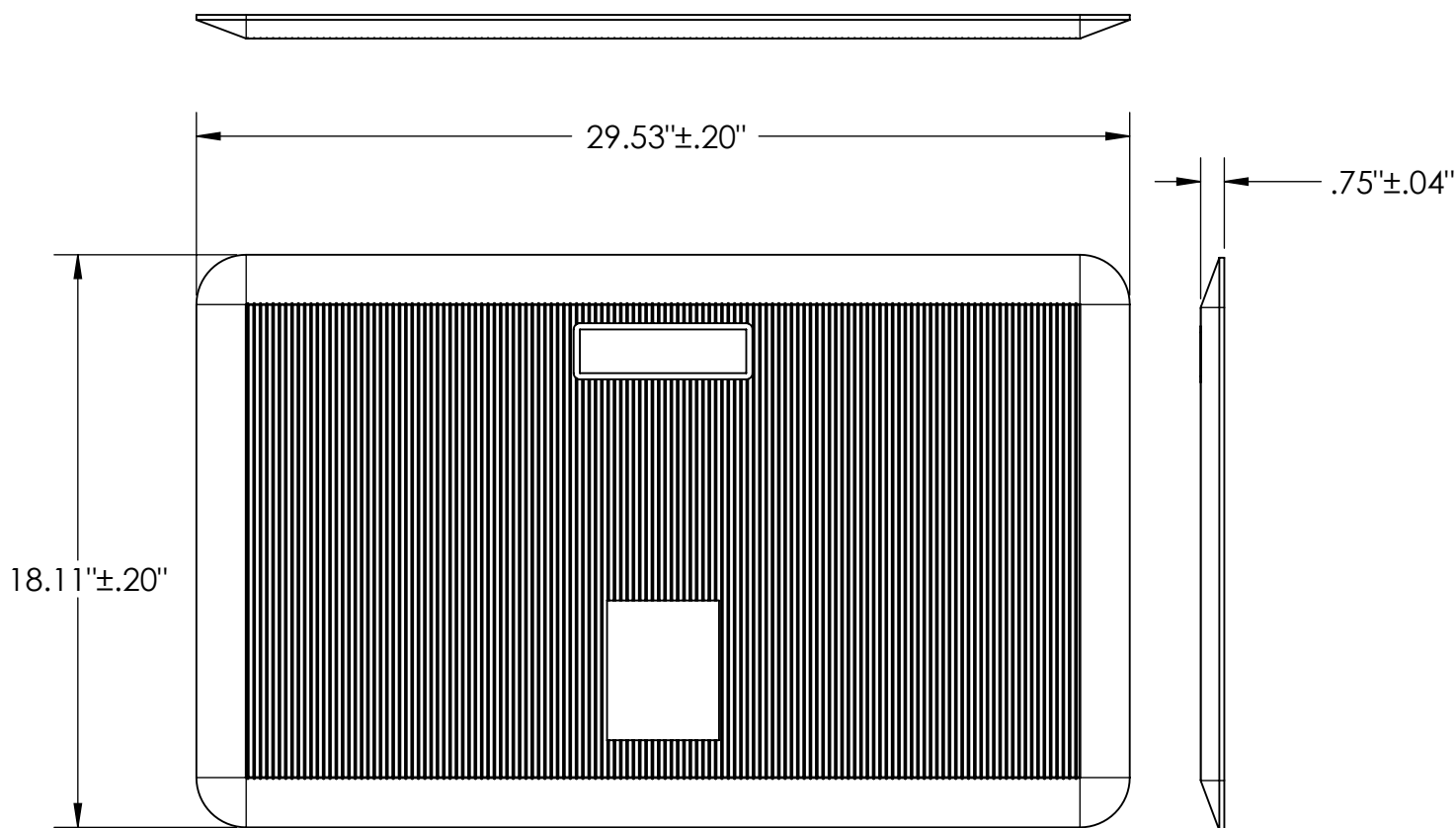
Anti-Fatigue Mat



LFO-C380B

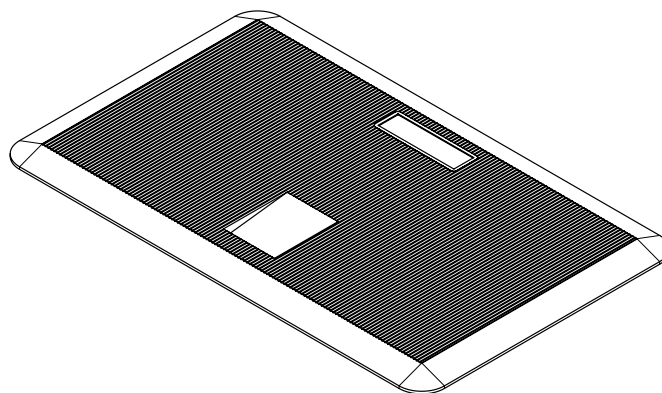
To help reduce leg fatigue so you can stand more, our ergonomically designed anti-fatigue mat is made of 3/4" thick 100% polyurethane foam and is designed to provide extra support for users who enjoy the health benefits of standing during their workday. The 18" x 30" environmentally friendly black mat comes with a patent pending foot hold and textured surfaces for easy adjustment and non-slip performance.

Features	Benefits
Made of 3/4" thick 100% polyurethane foam	For long lasting performance and comfort that helps reduce leg and lower back fatigue
Integral skin	Stain and puncture resistance surface prevents dirt or water absorption
Foot hold	Allows for simple mat positioning without having to bend over
18° beveled edge	Chair casters can easily roll over the mat edge
Textured top and bottom surface	Anti-slip surfaces prevent the mat from moving while someone is standing on the mat
Dimensions: 18" x 30" x 3/4"	Ideal sized to fit the most common applications
Meets RoHS Directive (EU) 2015/863	An environmentally sound product
Three year warranty	Tested to ASTM D7255-14 and ISO 34-1-2015, for years of use
Satin black finish	A neutral colorfast mat to match any office design décor



Anti-Fatigue Mat

Model	Dimensions	Weight	Box Size	Shipping Weight	Color
LFO-C380B	18" x 30" 3/4"	3.6 lbs.	18.75" x 1.5" x 30.25"	4.7 lbs	Black



Notes: 1. Weight = packaged shipping weight per unit. 2. Specifications are subject to change without notice.



LifeFlo Ergonomics

Toll Free: 866-446-3950

Fax: 864-248-6019

Need more information? info@lifefloergo.com

www.lifefloergo.com